

BrainStorm Cell Therapeutics

NASDAQ: BCLI



Dawson James Securities 5th Annual Small Cap Growth Conference

Preetam Shah, PhD, MBA
EVP and CFO
BrainStorm Cell Therapeutics

October 2019

Forward Looking Statement

Statements in this announcement other than historical data and information constitute "forward-looking statements" and involve risks and uncertainties that could cause BrainStorm Cell Therapeutics Inc.'s actual results to differ materially from those stated or implied by such forward-looking statements. Terms and phrases such as "may", "should", "would", "could", "will", "expect", "likely", "believe", "plan", "estimate", "predict", "potential", and similar terms and phrases are intended to identify these forward-looking statements. The potential risks and uncertainties include, without limitation, risks associated with BrainStorm's limited operating history, history of losses; minimal working capital, dependence on its license to Ramot's technology; ability to adequately protect the technology; dependence on key executives and on its scientific consultants; ability to obtain required regulatory approvals; and other factors detailed in BrainStorm's annual report on Form 10-K and quarterly reports on Form 10-Q available at <http://www.sec.gov>.

These factors should be considered carefully, and readers should not place undue reliance on BrainStorm's forward-looking statements. The forward-looking statements contained in this press release are based on the beliefs, expectations and opinions of management as of the date of this press release. We do not assume any obligation to update forward-looking statements to reflect actual results or assumptions if circumstances or management's beliefs, expectations or opinions should change, unless otherwise required by law. Although we believe that the expectations reflected in the forward-looking statements are reasonable, we cannot guarantee future results, levels of activity, performance or achievements.

Brainstorm at a Glance

CLINICAL STAGE BIOTECHNOLOGY COMPANY	ADVANCED STAGE CLINICAL PROGRAMS	LARGE ADDRESSABLE MARKETS
<p>Potential to be first-in-class autologous stem cell therapy for ALS and other neurodegenerative diseases</p>	<p>Repeat Dose Phase 3 ALS trial fully enrolled</p>	<p>ALS 30,000 patients (US) 450,000 (Worldwide)</p>
<p>Experienced US management team; R&D in Israel</p>	<p>Repeat Dose Phase 2 Progressive MS Trial actively enrolling</p>	<p>Progressive MS 500,000 patients (US) 1,250,000 (Worldwide)</p>
<p>Robust IP portfolio</p>	<p>Robust Phase 2 clinical data in ALS; promising preclinical data in other neurodegenerative disease</p>	<p>Neurodegenerative disease prevalence expected to increase as population ages</p>

Brainstorm's Pipeline

ALS – Amyotrophic Lateral Sclerosis (Lou Gehrig's Disease)				
Preclinical	Phase 1	Phase 2	Phase 3	

Progressive MS – Multiple Sclerosis				
Preclinical	Phase 1		Phase 2	Phase 3

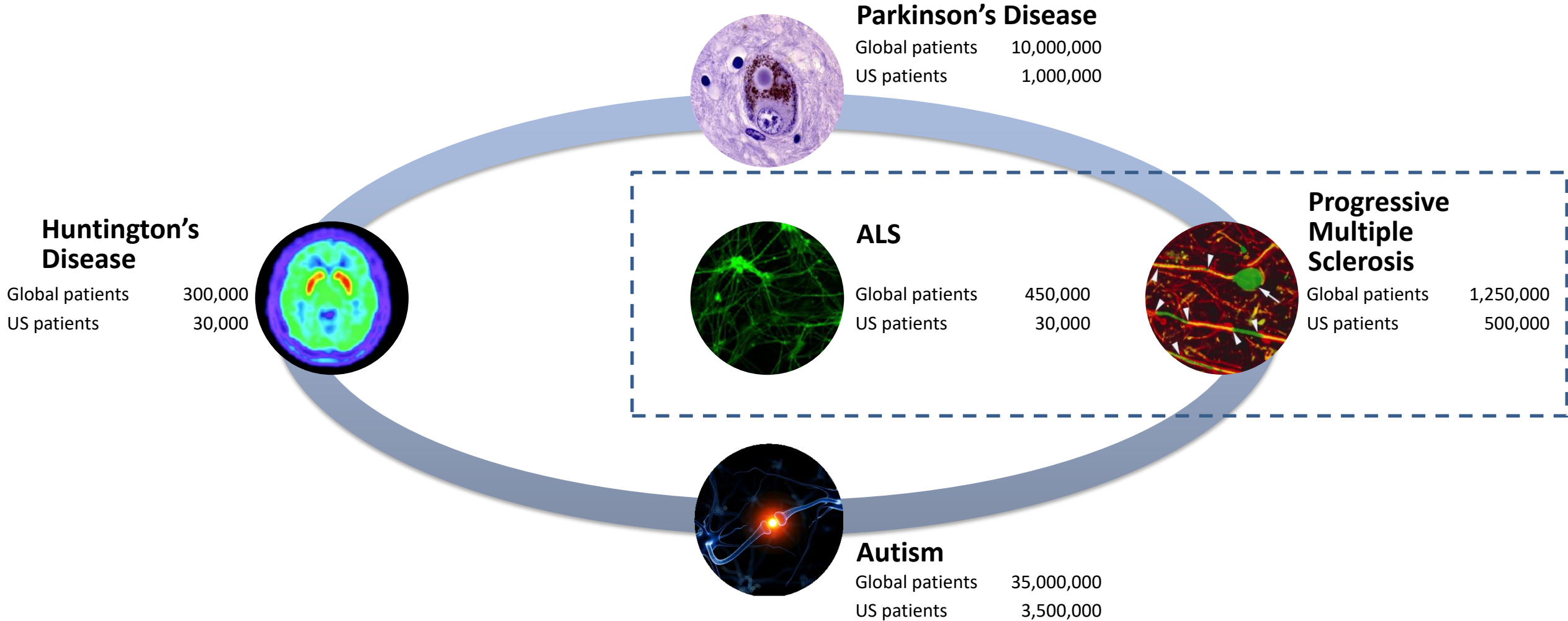
Parkinson's Disease				
Preclinical	Phase 1	Phase 2	Phase 3	

Autism Spectrum Disorder				
Preclinical	Phase 1	Phase 2	Phase 3	

Huntington's Disease				
Preclinical	Phase 1	Phase 2	Phase 3	

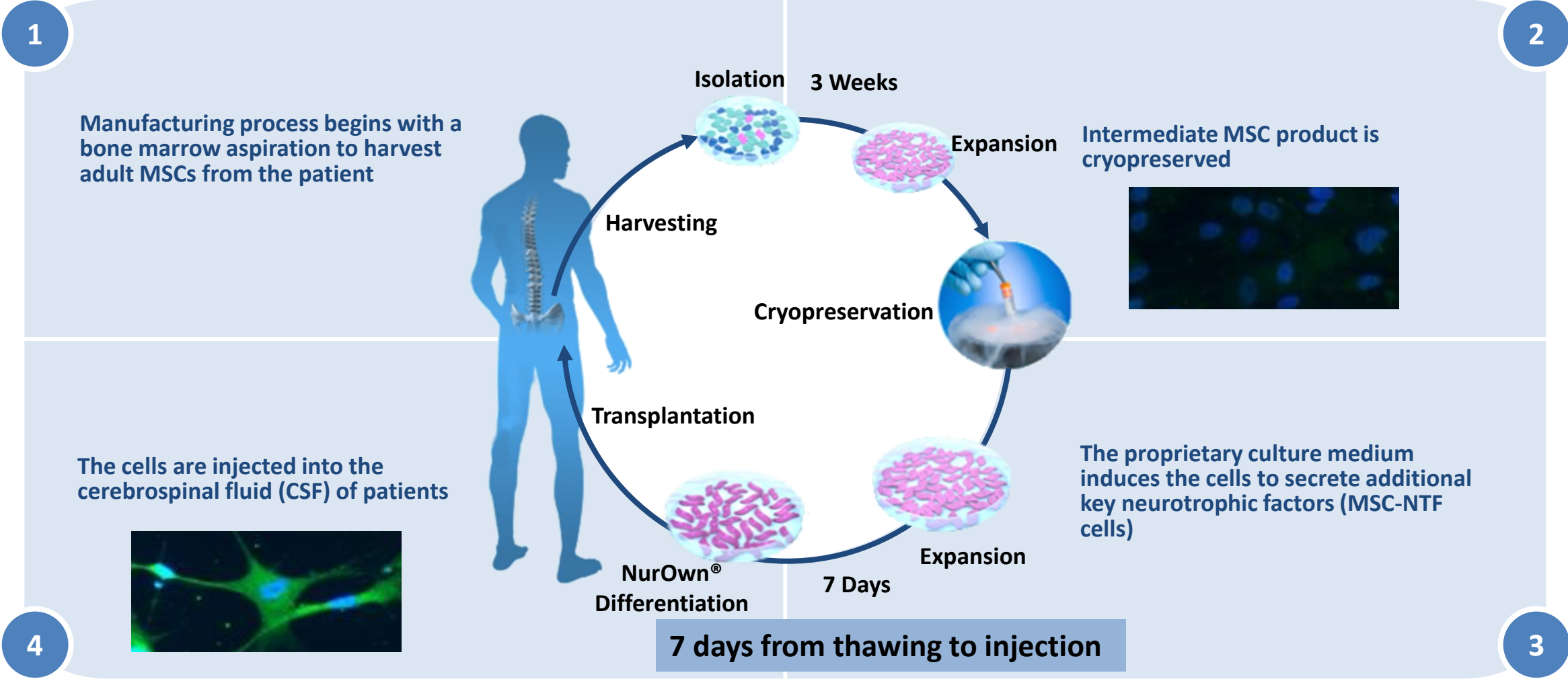
Peripheral Nerve Injury				
Preclinical	Phase 1	Phase 2	Phase 3	

NurOwn® - Potential Clinical Indications

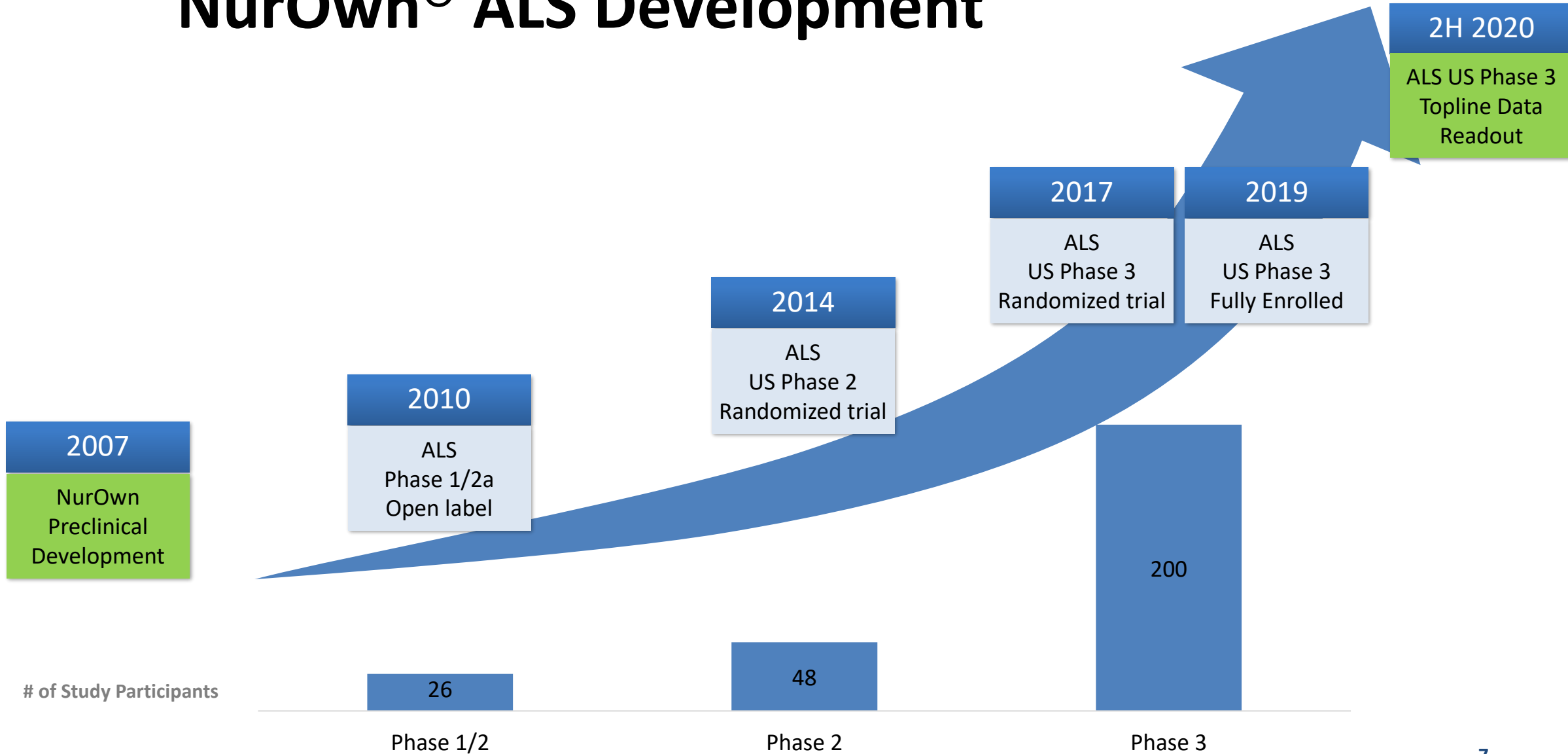


NurOwn® is successfully evaluated in preclinical models of various neurodegenerative disease

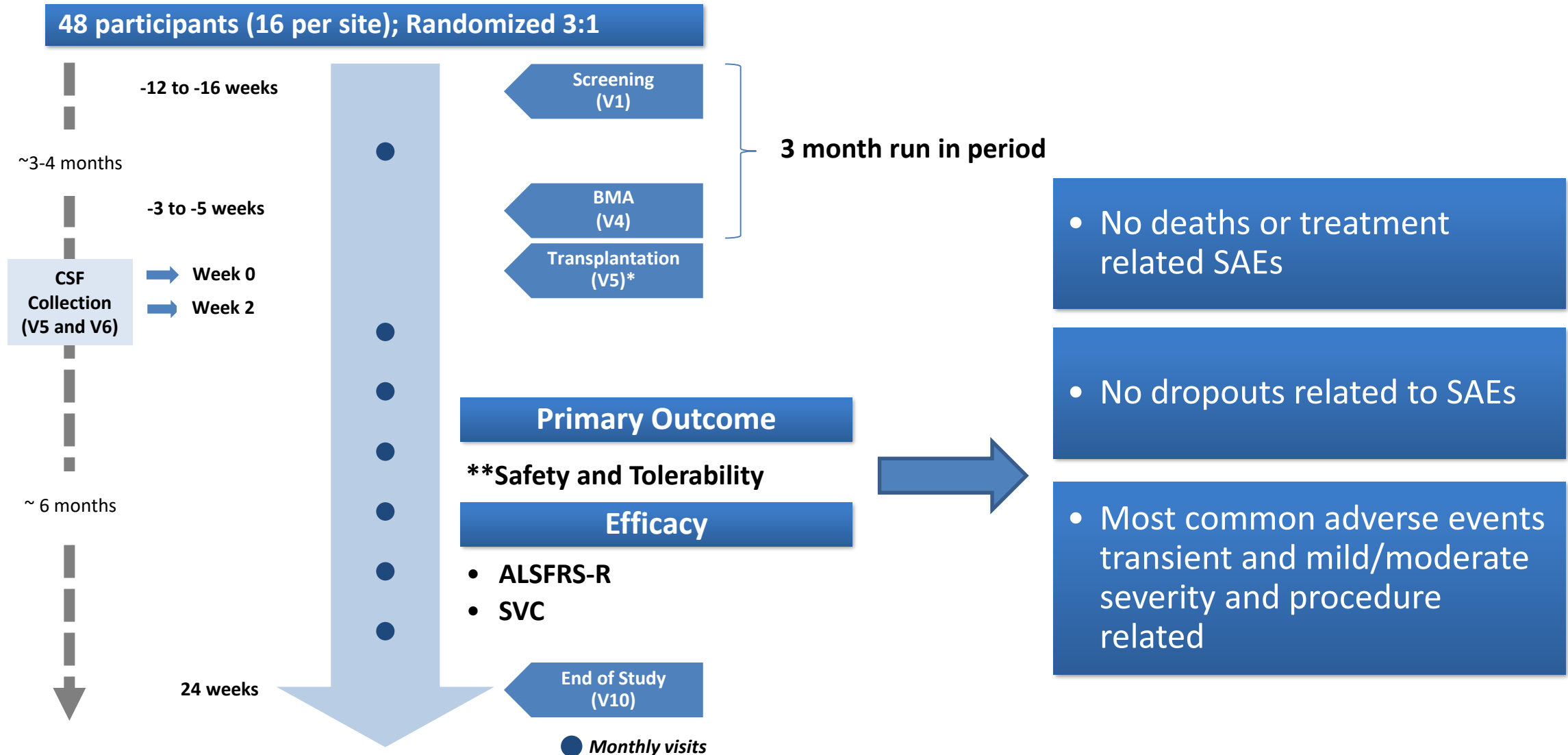
NurOwn® Process



NurOwn® ALS Development



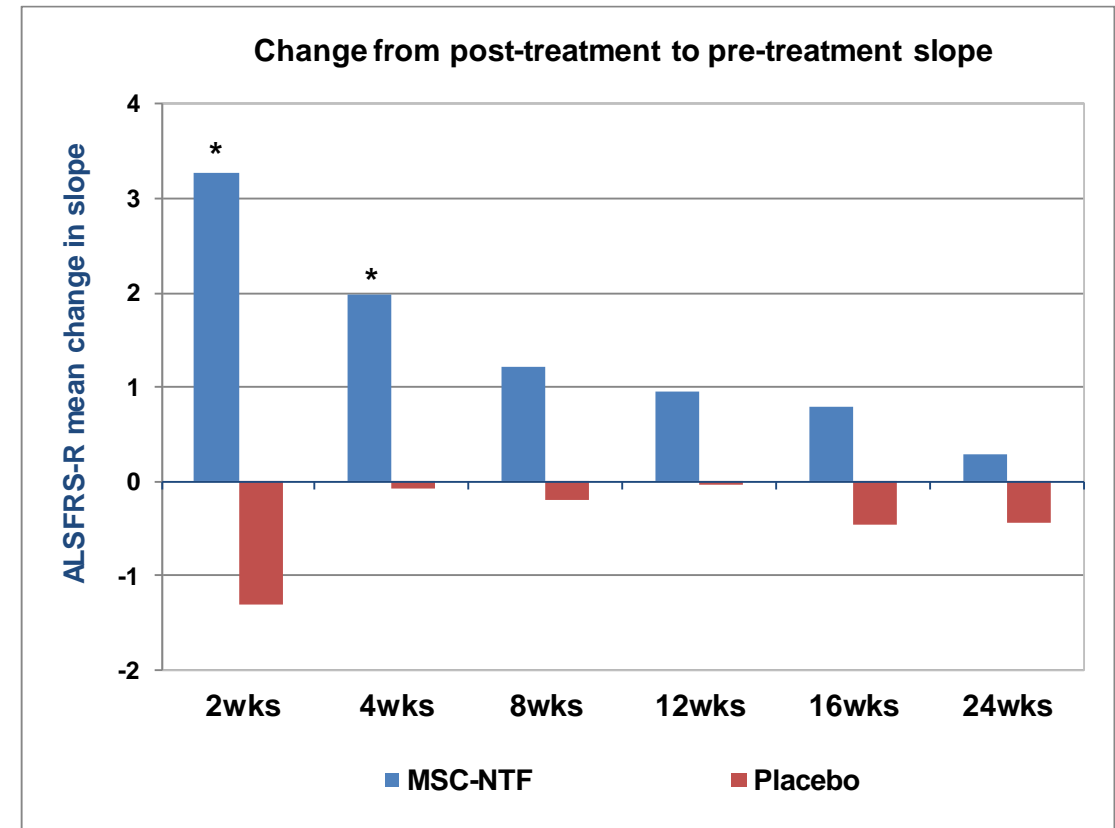
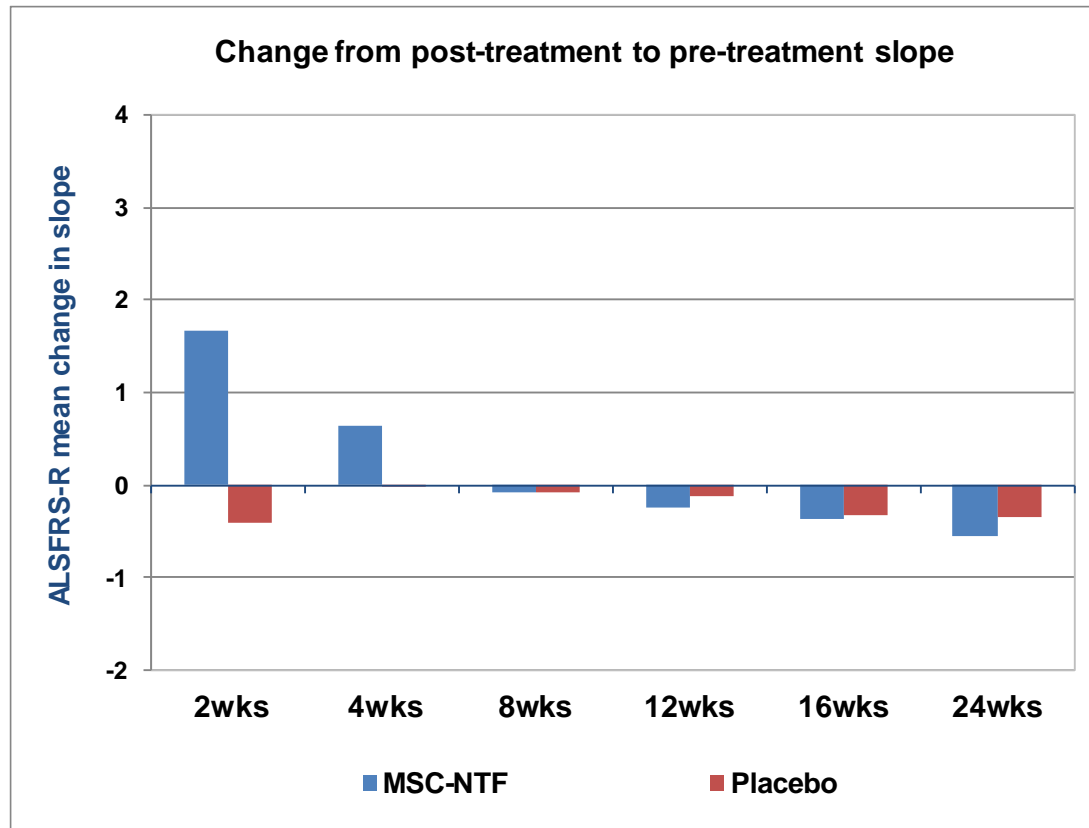
NurOwn[®] ALS Phase 2 Double-Blind Placebo-Controlled Trial



ALSFRS-R slope improvement (mean pre-post LS mean slope change/month)

All participants (n=46)

Rapid progressors (n=21)

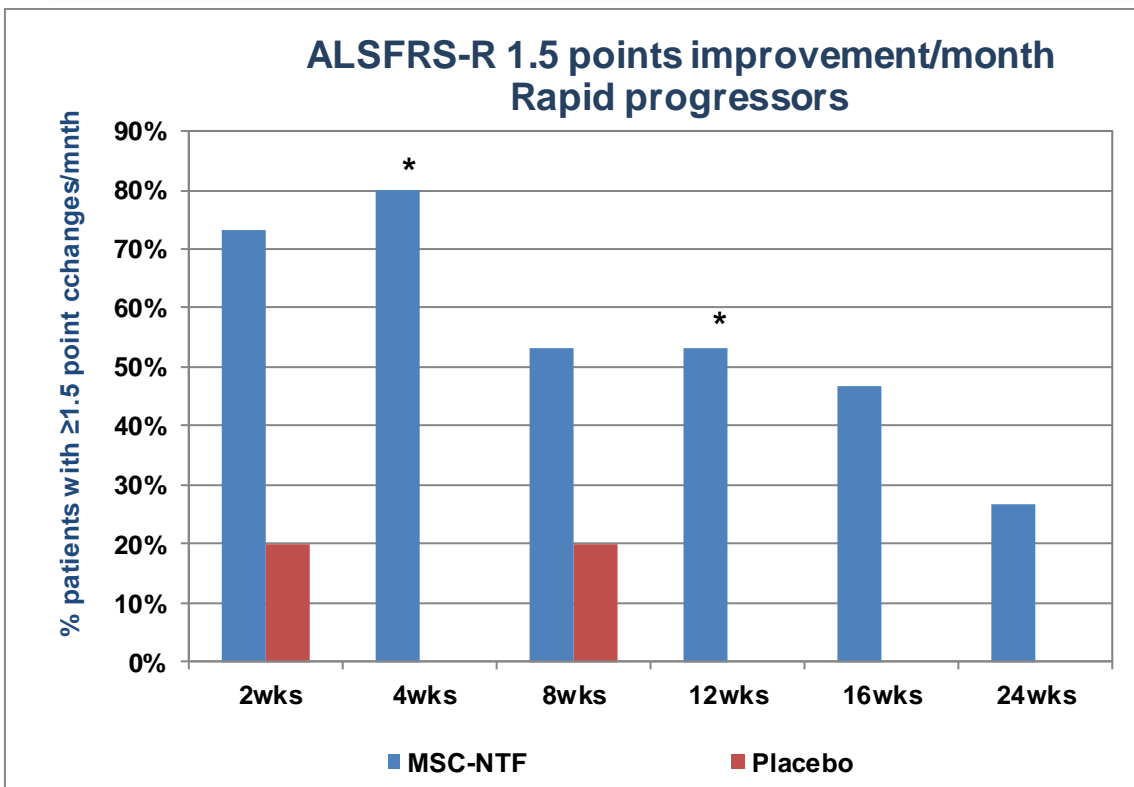
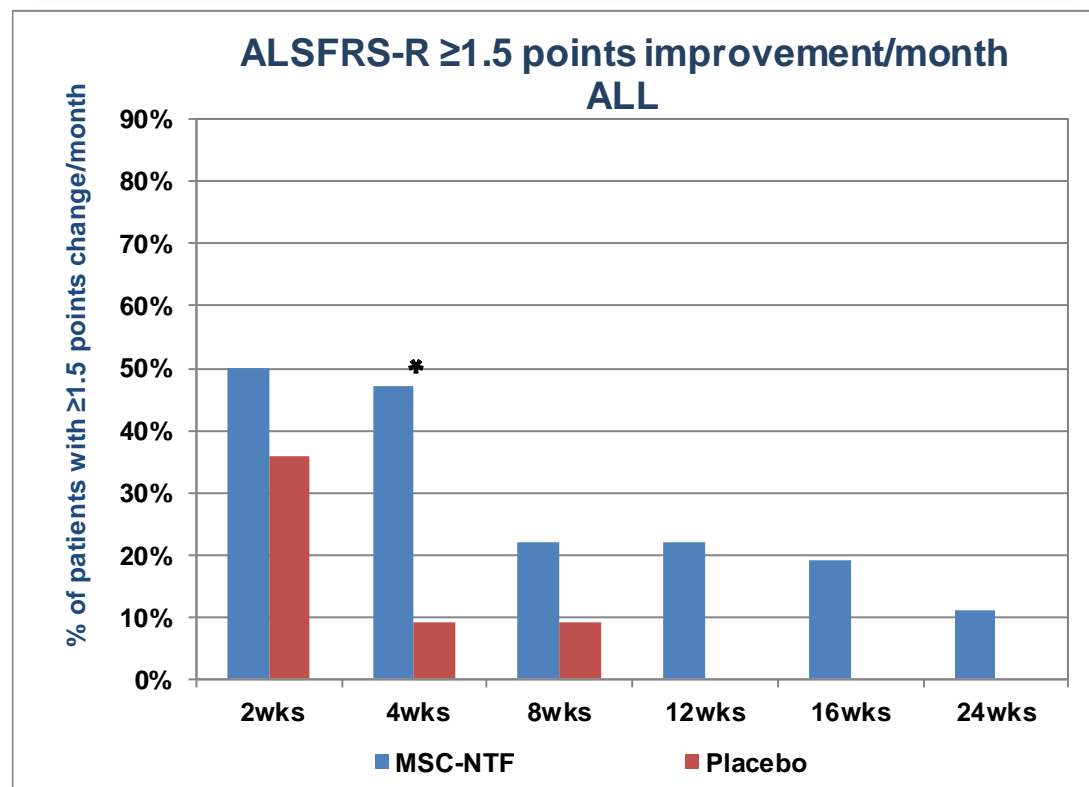


*p<0.05
2 wks p=0.021 4 wks p=0.033

Phase 2 Responder Analysis: ≥1.5 point/month improvement ALSFRS-R Slope

All participants (n=46)

Rapid progressors (n=21)

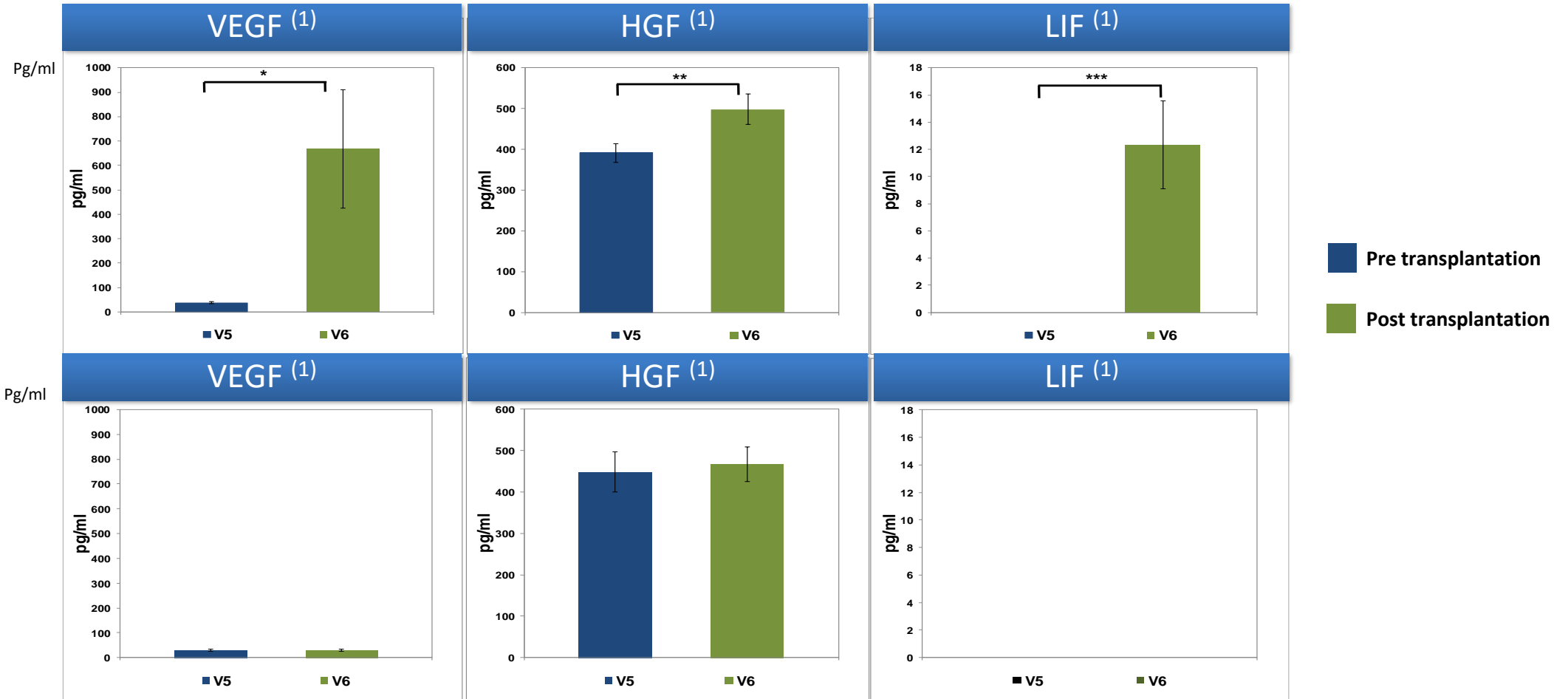


* $p < 0.05$

NurOwn® Phase 2 Increased CSF Neurotrophic Factors 2 Weeks Post-Treatment

NurOwn®
(n = 26)

Placebo
(n = 9)



1. Mean ± SEM. *p < 0.05, **p < 0.01, ***p < 0.001 for VEGF, HGF and LIF, respectively.

CSF Inflammatory biomarkers significantly reduced by NurOwn (2 weeks post treatment)

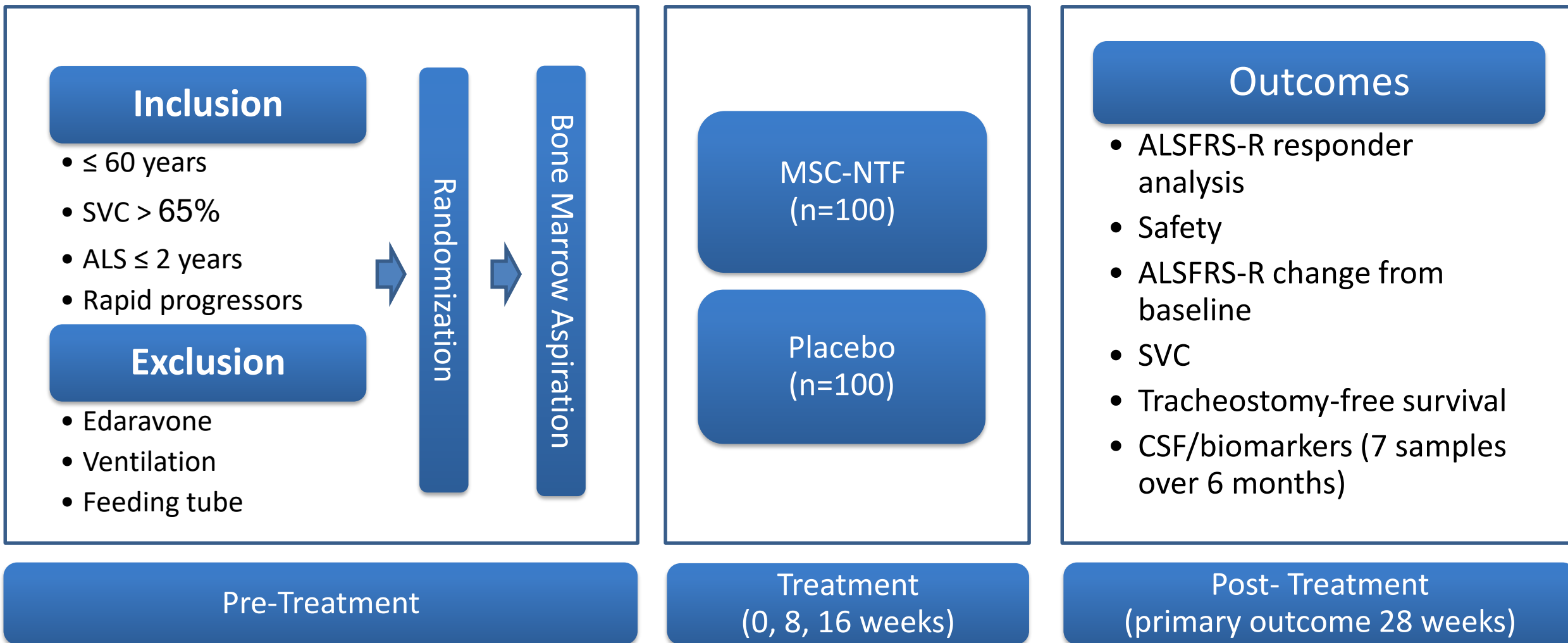
MSC-NTF
(n = 26)

Placebo
(n = 9)



Mean ± SEM. ** p<0.01, *** p< 0.001

NurOwn[®] ALS Phase 3 Study



Phase 3 ALS Status



- **Phase 3 enrollment completed in October 2019**
- **DSMB safety review conducted end of October 2019**
 - Trial to continue
 - No protocol changes
- **Top line data Q4, 2020**

Phase 2 MS Clinical Trial Status



- **IND granted December 2018**
- **Repeat intrathecal dosing MSC-NTF cells every 2 months**
- **Validated clinical endpoints and biomarkers**
- **5 clinical trial sites in US**
- **First subjects enrolled March 2019**
- **Top Line data mid 2020**

Financial Highlights

\$US in Thousands <small>(except for Shares, Warrants and Options data)</small>	June 30, 2019
Cash and cash equivalents	1126
Short-term deposit	1575
Non-Dilutive Grants	3862*
Total Liquidity	6563
Cap Structure	
Debt	-
Shares Outstanding <small>(as of August 7, 2019)</small>	22,550,442
Options / Warrants outstanding	1,243,107 / 4,481,934
Net Operating Loss <small>(for 6 months ending June 30)</small>	9785

* Based on achieving certain milestones.

Brainstorm Senior Leadership Team

Chaim Lebovits, President & Chief Executive Officer

Arturo Araya, MBA Chief Commercial Officer

Ralph Kern, MD, MHSc Chief Operating Officer & Chief Medical Officer

Preetam Shah, PhD, MBA EVP & Chief Financial Officer

Uri Yablonka EVP & Chief Business Officer

Revital Aricha, PhD VP Research & Development

Yael Gothelf, PhD VP Scientific & Regulatory Affairs

Yossef Levy, PhD VP Cell Production

Mary Kay Turner VP Patient Advocacy & Government Affairs

Susan Ward, PhD Head of Clinical Operations

Board of Directors	Scientific Advisory Board
Irit Arbel, PhD	Jerold Chun, MD, PhD
June Almenoff, MD, PhD	Stanley H. Appel, MD
Anthony Polverino, PhD	Amit Bar-Or, MD
Chen Schor, MBA, CPA	
Malcolm Taub	
Uri Yablonka	



brainstorm
cell therapeutics

BrainStorm Cell Therapeutics

NASDAQ: BCLI

Thank You